

Tickblaze Connection Guide

Who Is This Guide For?

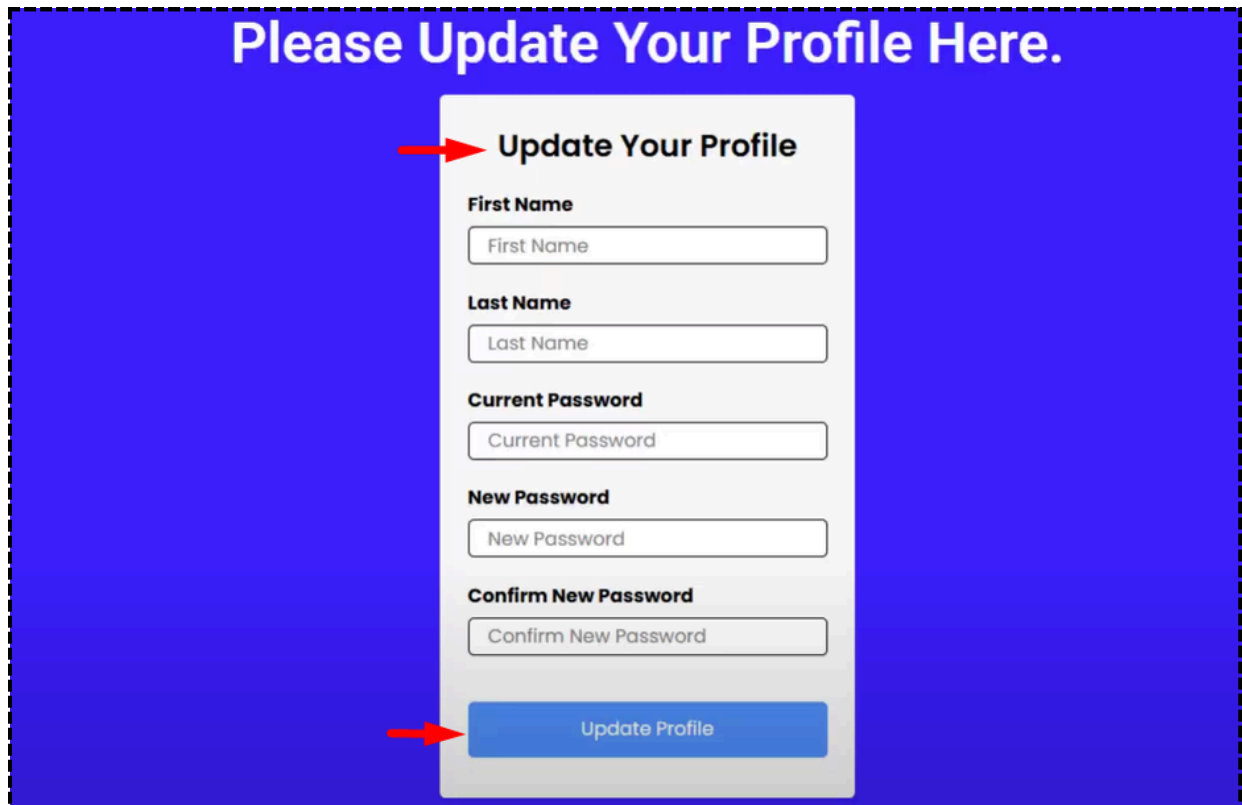
- **New Tickblaze Users** — follow the full setup including activation and password creation.
- **Existing Tickblaze Users** — skip to login and connection steps.

For New Tickblaze Users

Step 1: Activate & Download Tickblaze

Tickblaze is our preferred trading platform and is **included** with your PST account. Before downloading, please activate your account:

1. **Go to the [Tickblaze Member's Area](#)** and enter your **email** and **temporary password** received in your onboarding email.
2. **Complete the registration form:**
 - Update your **name**
 - Set a **new password**



Please Update Your Profile Here.

Update Your Profile

First Name

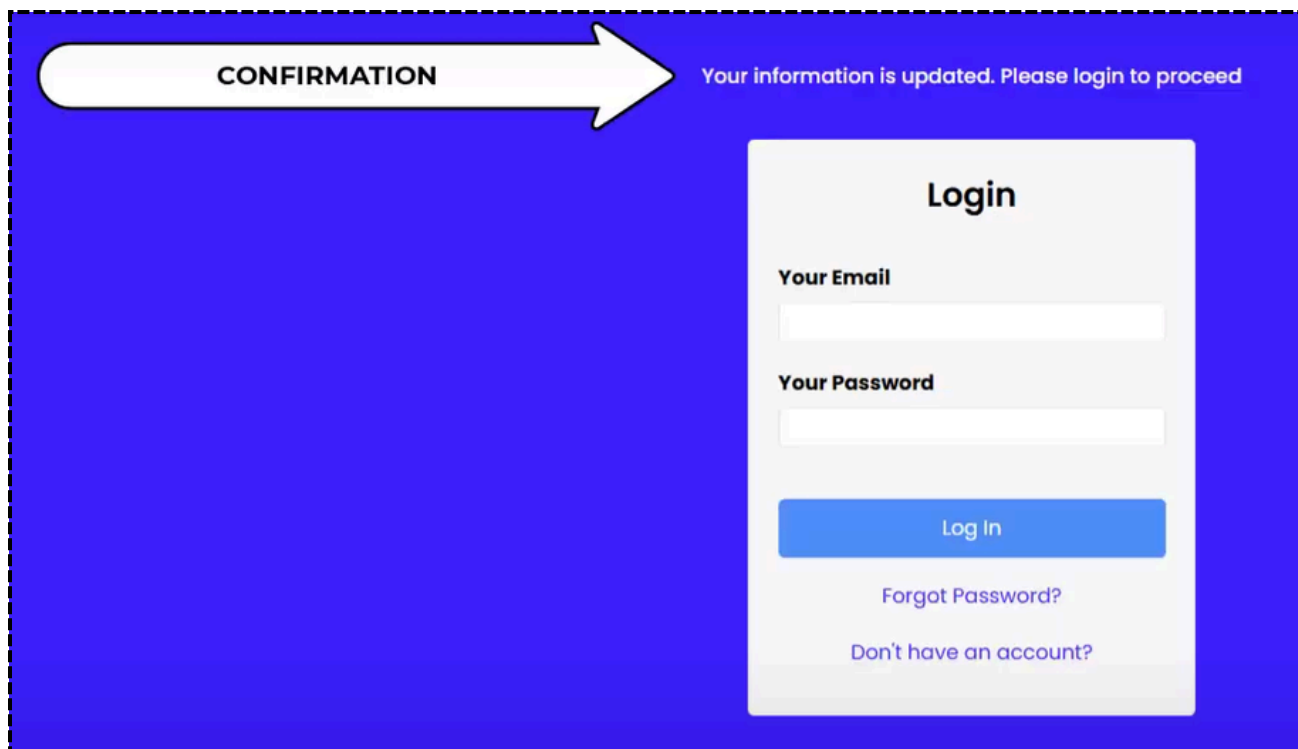
Last Name

Current Password

New Password

Confirm New Password

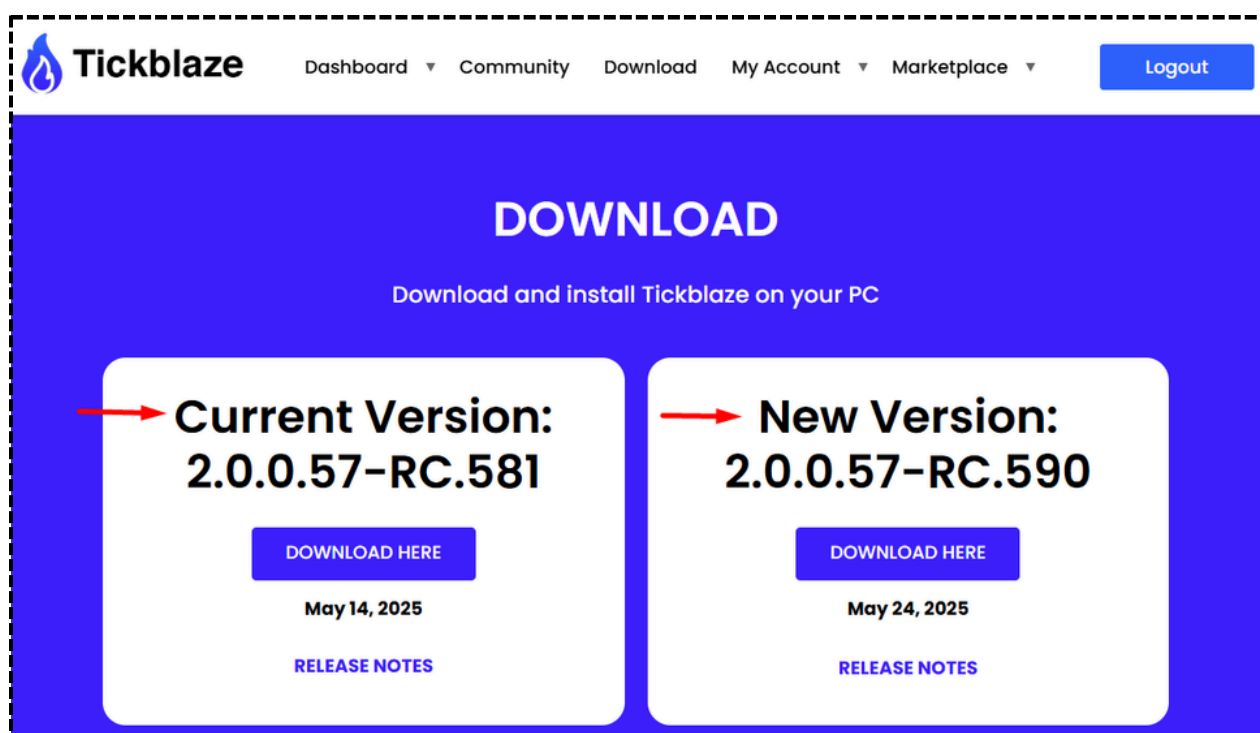
After that you will receive a confirmation:



✓ Once completed, you can **download Tickblaze** directly from the Member's Area:

<http://members.tickblaze.com/downloads>

We recommend downloading the **Current Version** for best stability. The **Beta Version** offers early access to new features but may have bugs.



Step 2: Download & Log In to R|Trader Pro

Before you begin using Tickblaze, you must first log into **R|Trader Pro** using your PropShopTrader (PST) credentials. This step is mandatory and ensures proper risk management and order routing.

1. Open the R | Trader Pro application.
2. Click on '**Remember Me**' so the system saves your credentials and you don't have to enter them each time you log in.
3. **Orders**: Ensure this is turned **[On]**
4. Leave **Selective Load** turned **OFF**.
5. Copy and paste your **Rithmic ID** and **Password** in both sections.
6. Set the **System** to: **PropShopTrader**.
7. Set the **Gateway** to: **Chicago Area** or the area closest to you.
8. **Market Data**: Ensure this is turned **[On]**. Use the same credentials as above.
9. **Allow Plugins**: Click on '**Allow Plugins**' to turn this feature **ON**. This enables position syncing between Rithmic and your external trading platform.



Important

R|Trader Pro must remain open in the background while using Tickblaze.

For Existing Tickblaze Users

Step 1: Log In to Tickblaze

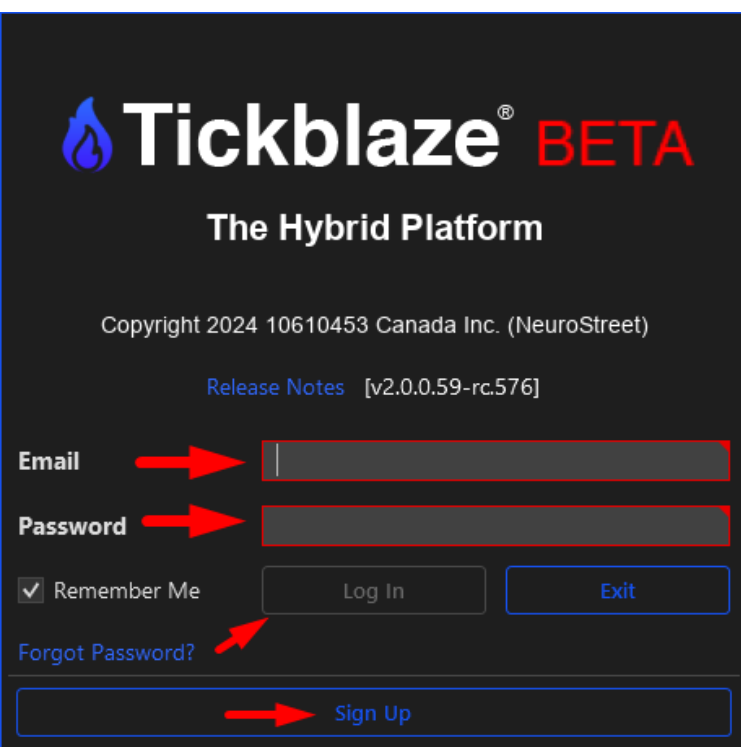
1. Launch the **Tickblaze** platform.
2. Log in using your existing credentials.

🔑 Forgot your password? Reset it via the [Tickblaze Member's Area](#).

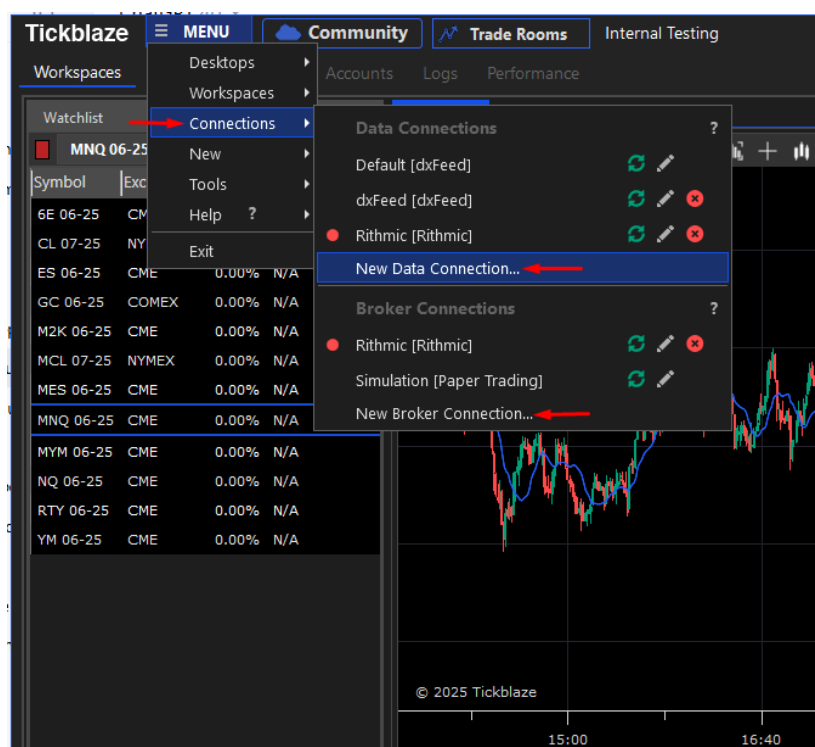
Steps for All Users: Connect Tickblaze to Rithmic

Step 1: Log into Tickblaze using your credentials

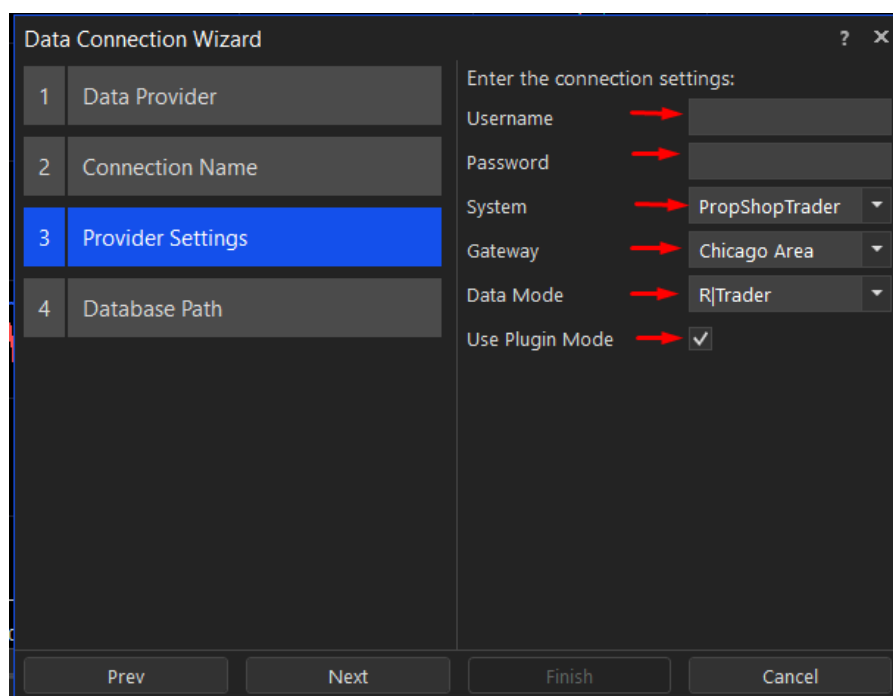
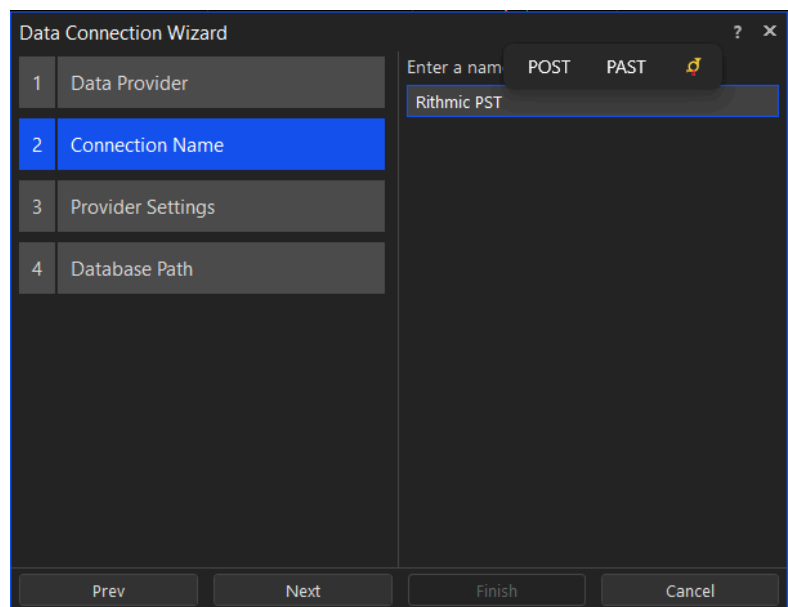
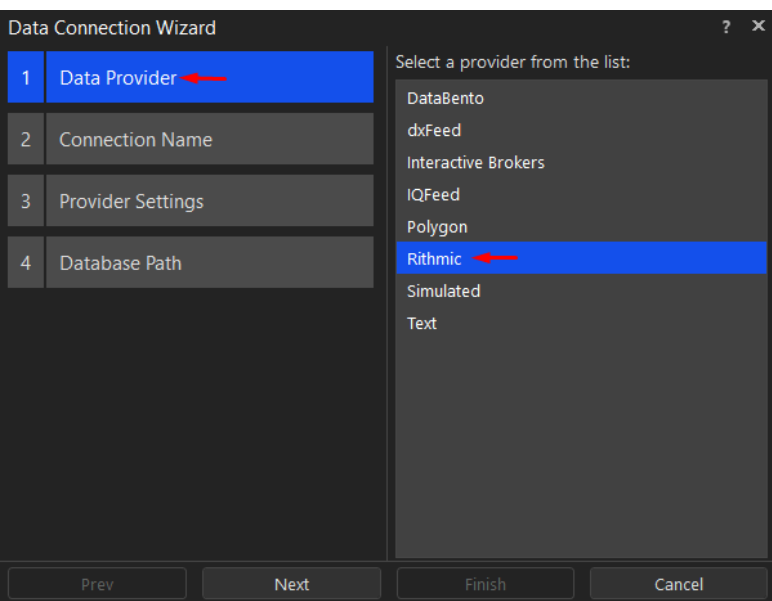
Step 2: Go to Menu (≡) → Connections → Click **New Data Connection**



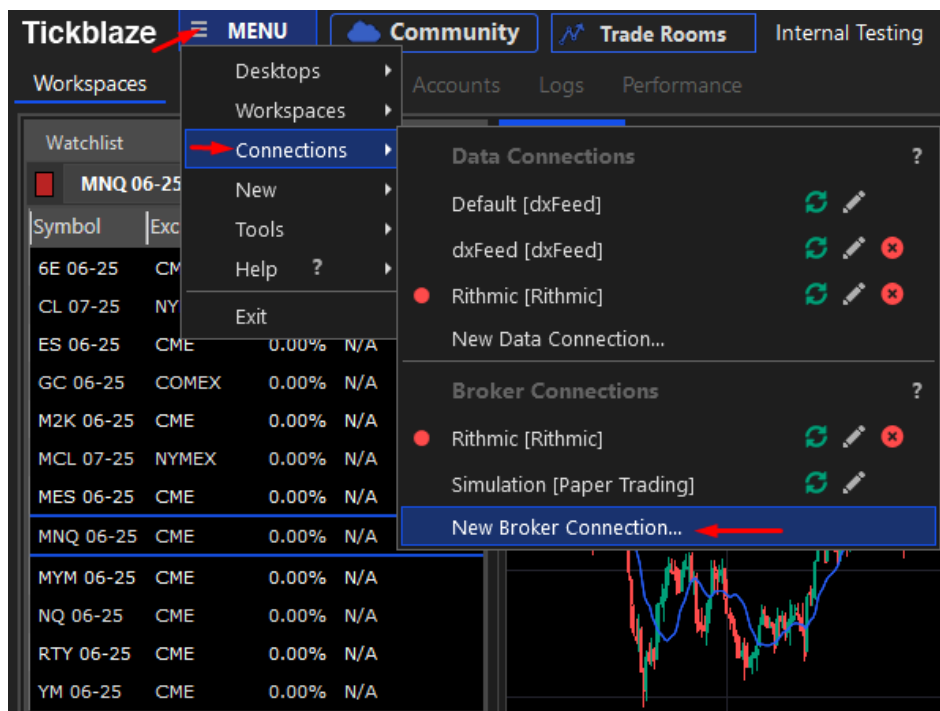
The image shows the Tickblaze BETA login interface. At the top, the logo 'Tickblaze BETA' is displayed with the tagline 'The Hybrid Platform'. Below this, the copyright information 'Copyright 2024 10610453 Canada Inc. (NeuroStreet)' and the release notes 'Release Notes [v2.0.0.59-rc.576]' are visible. The login form includes fields for 'Email' and 'Password', both highlighted with red arrows. There is a 'Remember Me' checkbox and a 'Log In' button. A 'Forgot Password?' link is also present, with a red arrow pointing to it. At the bottom, there is a 'Sign Up' button, also highlighted with a red arrow.



Step 3: Select **Rithmic** as your provider → Add a Connection Name → Enter your **PST's Rithmic credentials** under **'Provider Settings'** → Select **'Data Mode'** as **'R|Trader'** → ☒ Check the **'Use Plugin Mode'** box

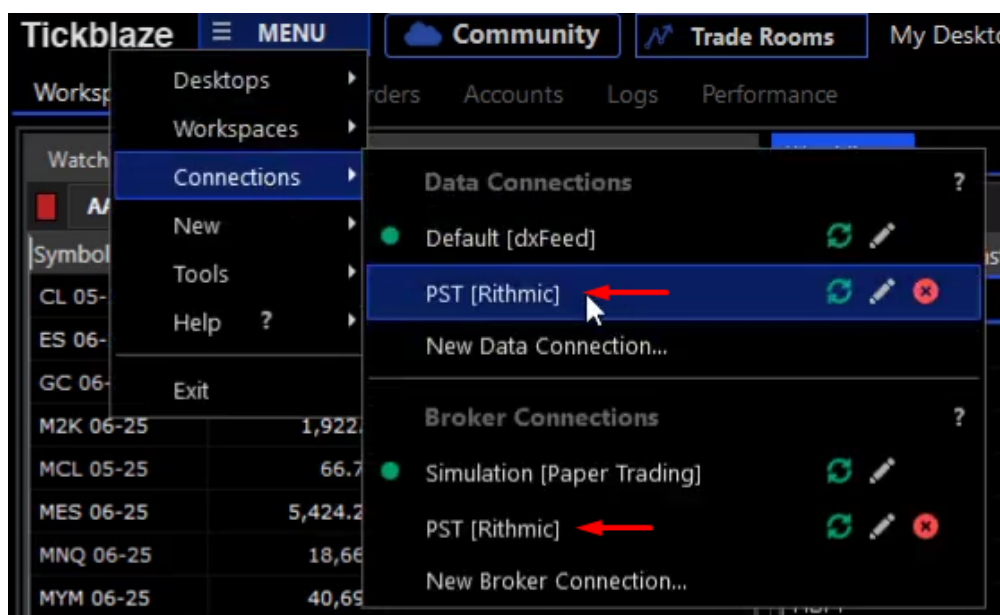


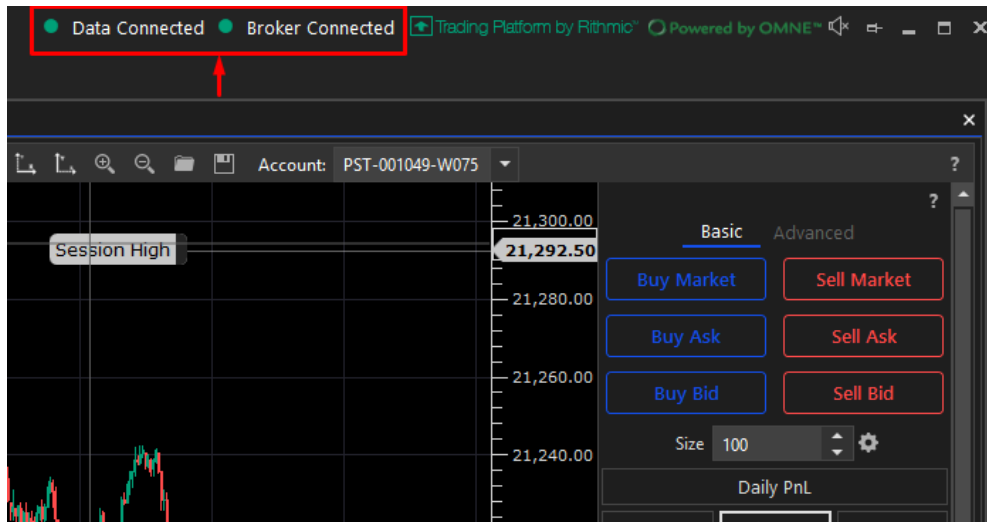
Step 4: Repeat the same process for **‘New Broker Connection’**



Step 5: Once setup is complete, return to the **Connections** section and select both the **Data Connection** and **Broker Connection** you created.

After a successful connection, you'll see **‘Data Connected’** and **‘Broker Connected’** indicators near the top border of the Tickblaze window, **confirming that both connections are active with a green dot.**

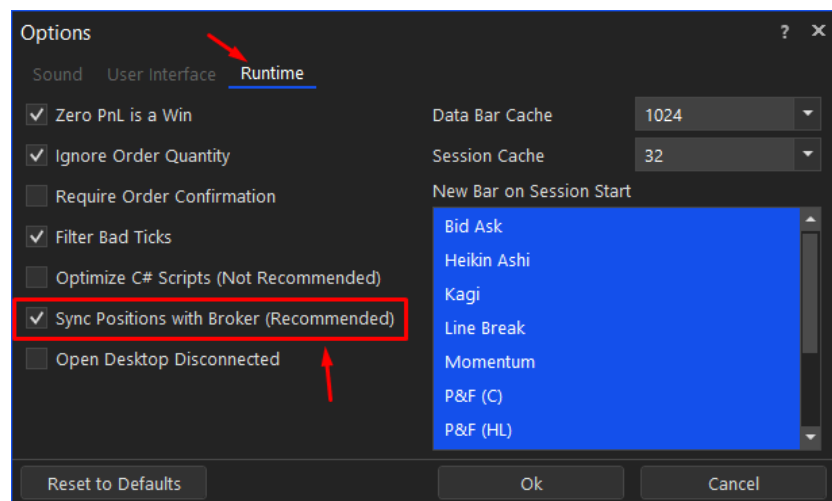
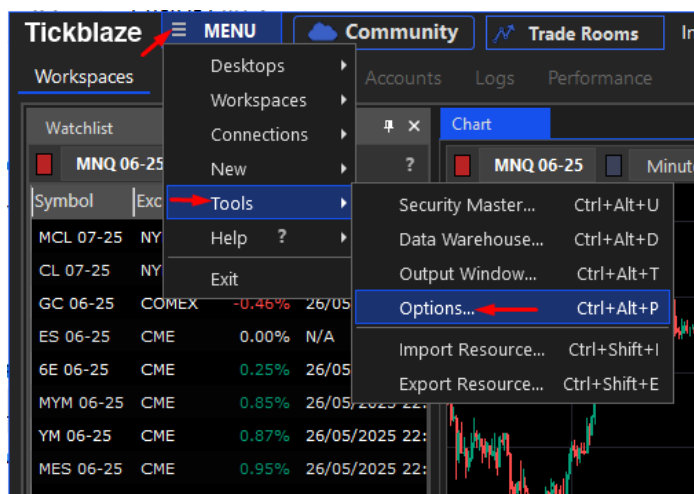




Step 6: Sync Positions with Rithmic

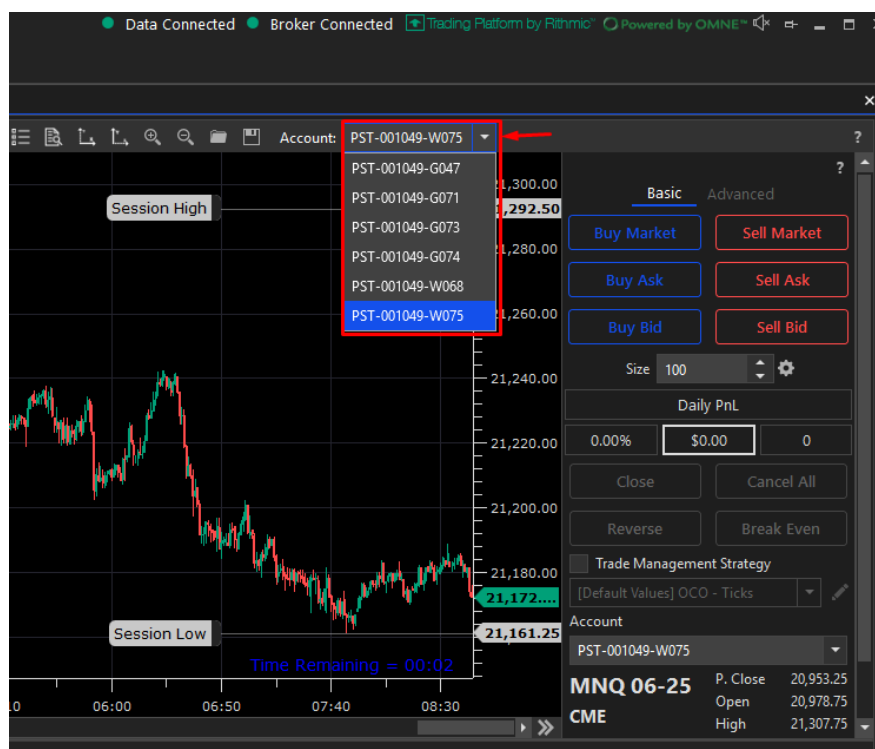
1. Go to **Menu** (≡) → **Tools** → **Options** (CTRL + ALT + P)
2. Select **Runtime** from the right-hand tab.
3. ☒ Check the box: **Sync Positions with Broker (Recommended)**

This ensures your trades are mirrored properly between Tickblaze and R|Trader Pro.



You can now:

- View all trading accounts from the **Account** field on your charts
- Monitor your trades via the **Accounts** tab
- Execute orders confidently across Tickblaze and R|Trader Pro



The screenshot shows the Tickblaze interface with the 'Accounts' tab selected. The table below lists the accounts and their associated values.

Name	Currency	Cash Value	Net Liquidation	Gross Realized PnL	Realized PnL	Unrealized PnL	Total PnL	Remaining Drawdown	Liquidation Balance
PST-001049-G047	USD	\$61,527.65	\$61,527.65	\$-6.5	\$-7.7	\$0	\$-7.7	\$11,427.65	\$50,100
PST-001049-G073	USD	\$50,051	\$50,051	\$0	\$0	\$0	\$0	\$2,500	\$47,551
PST-001049-W075	USD	\$50,000	\$50,000	\$0	\$0	\$0	\$0	\$2,500	\$47,500
PST-001049-G071	USD	\$50,000	\$50,000	\$0	\$0	\$0	\$0	\$2,500	\$47,500

You're All Set!

You've now:

- ✓ Activated Tickblaze
- ✓ Connected to Rithmic Data
- ✓ Synced your PST account
- ✓ Enabled real-time risk sync between platforms
- ✓ Selected your account to trade on