

# Tickblaze Connection Guide

## Who Is This Guide For?

- **New Tickblaze Users** – follow the full setup including activation and password creation.
- **Existing Tickblaze Users** – skip to login and connection steps.

### For New Tickblaze Users

#### Step 1: Activate & Download Tickblaze

Tickblaze is our preferred trading platform and is **included** with your PST account. Before downloading, please activate your account:

1. **Go to the [Tickblaze Member's Area](#)** and enter your **email** and **temporary password** received in your onboarding email.
2. **Complete the registration form:**
  - Update your **name**
  - Set a **new password**

**Please Update Your Profile Here.**



**Update Your Profile**

**First Name**

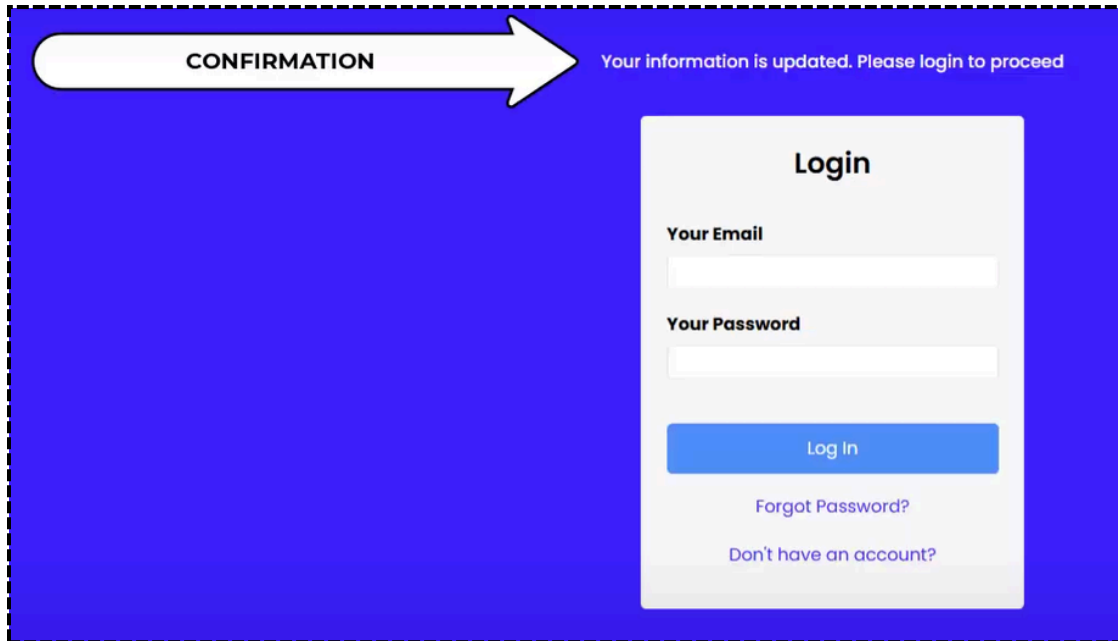
**Last Name**

**Current Password**

**New Password**

**Confirm New Password**

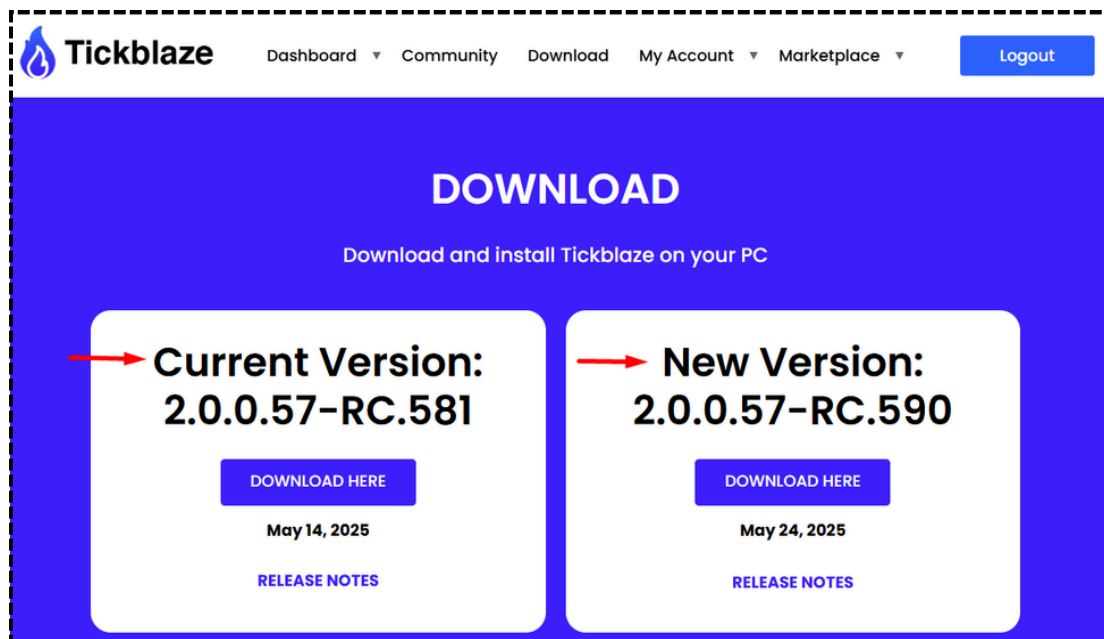
After that you will receive a confirmation:



✓ Once completed, you can **download Tickblaze** directly from the Member's Area:

<http://members.tickblaze.com/downloads>

We recommend downloading the **Current Version** for best stability. The **New Version** offers early access to new features but may have bugs.



## For Existing Tickblaze Users

### Step 1: Log In to Tickblaze

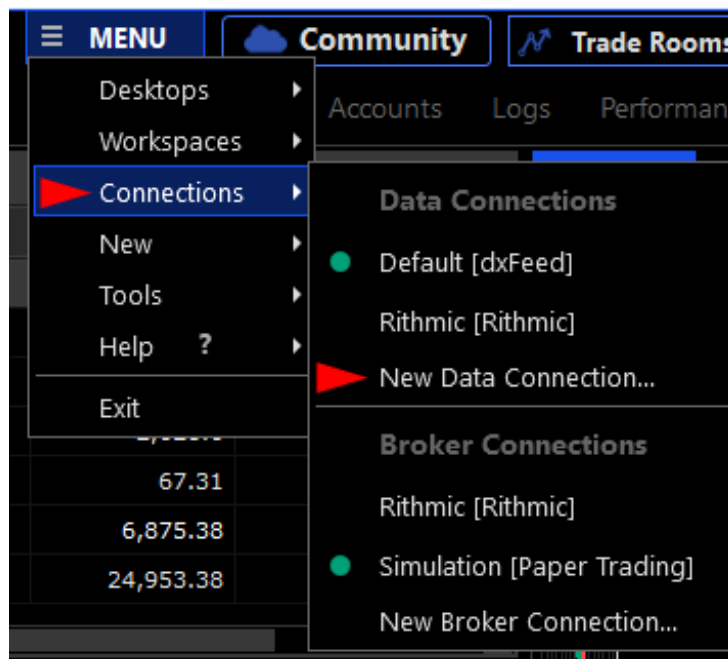
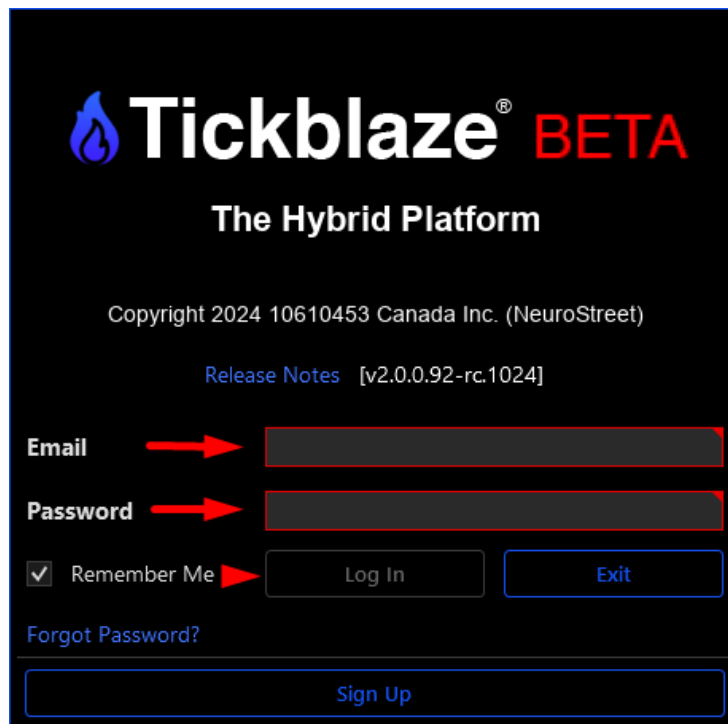
1. Launch the **Tickblaze** platform.
2. Log in using your existing credentials.

🔑 Forgot your password? Reset it via the [Tickblaze Member's Area](#).

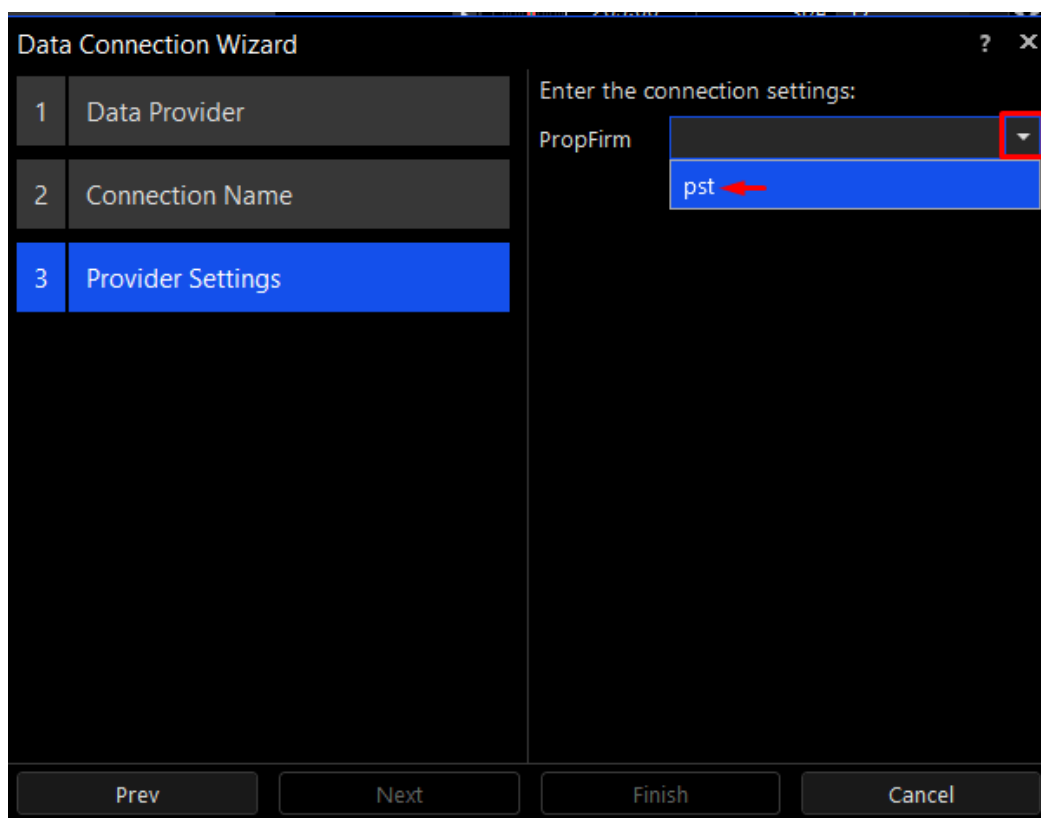
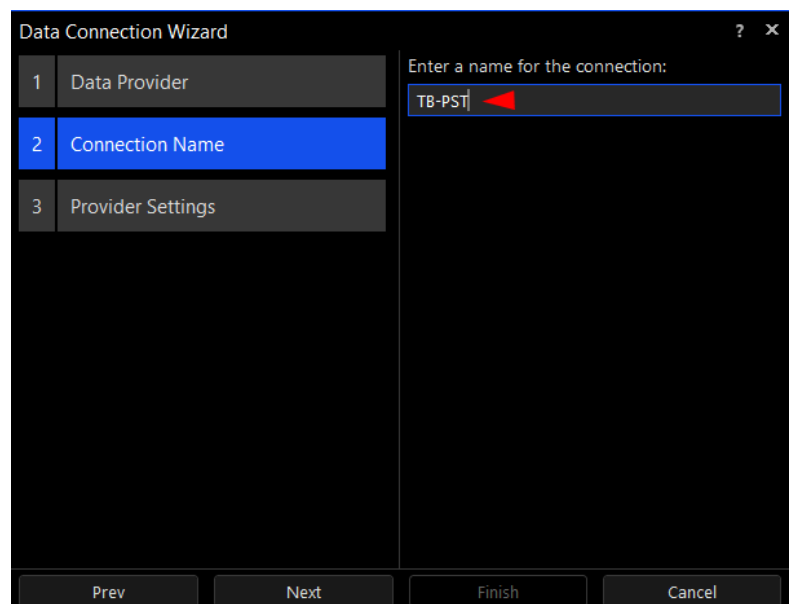
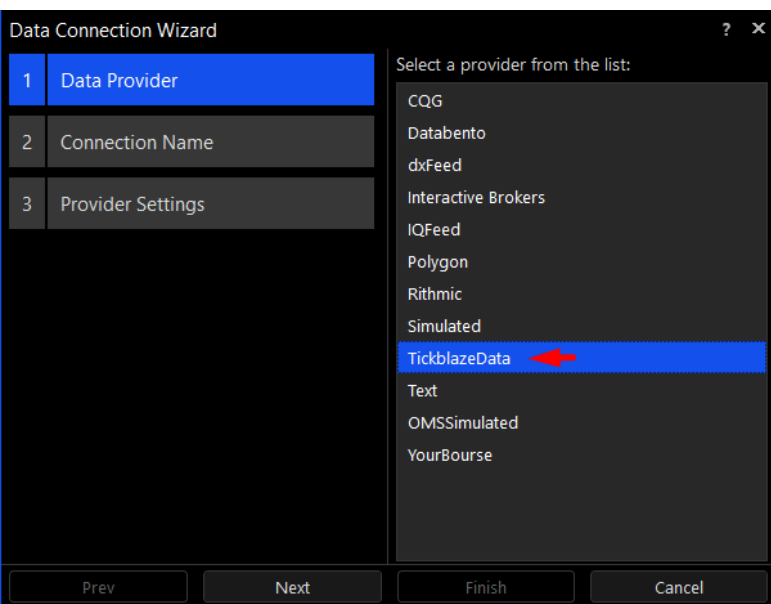
# Connection Steps for All Users

**Step 1:** After downloading the new build, log into Tickblaze using your credentials

**Step 2:** Go to Menu (☰) → Connections → Click **New Data Connection**



**Step 3:** Select **'TickblazeData'** as the Data provider → Add any Connection Name → Select **'PST'** as the Prop Firm under **'Provider Settings'**

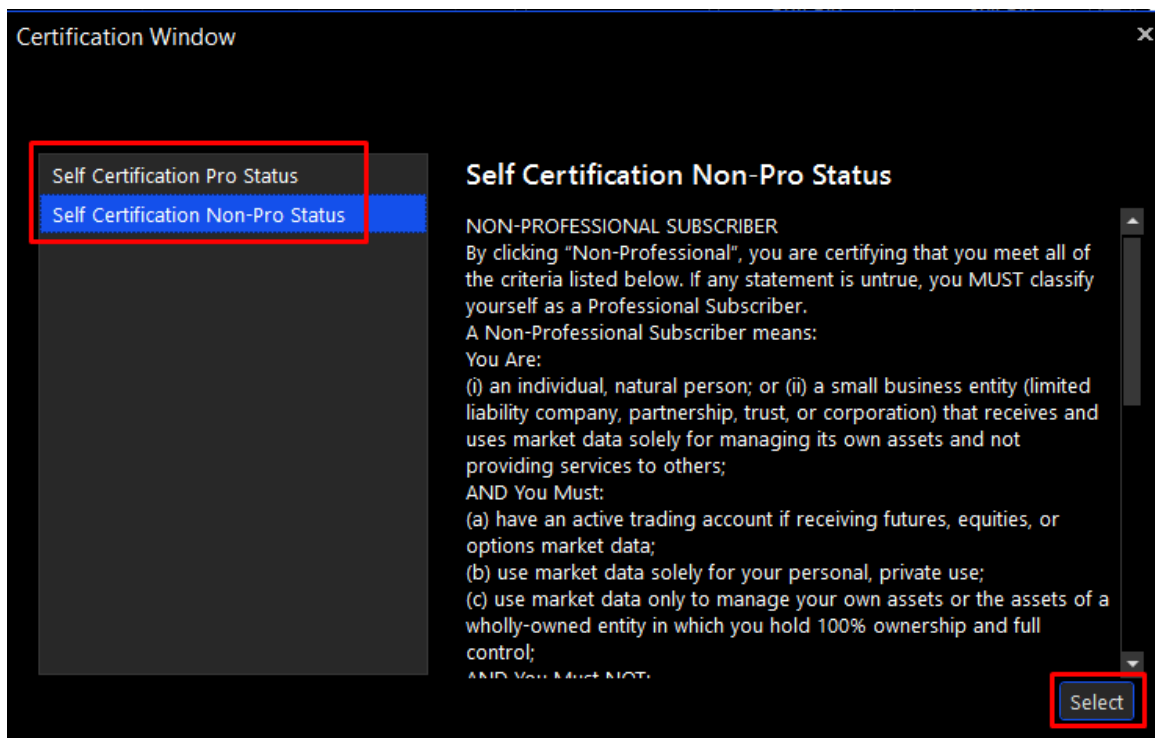


**Step 4:** Select the connection after its created.

**Step 5:** After selecting the connection, **complete the signing of two mandatory agreements.**

1. **Market Data Self-Certification**

- **Review the document and select your correct classification:**
  - i. **Select ‘Non-Professional’ and submit if** trading for personal use and not affiliated with a financial institution. **(Most users are Non-Pro)**
  - ii. **Select ‘Professional’ and submit only if** you meet the qualifying criteria: You hold a valid financial license You are employed by a financial or trading firm You use market data on behalf of a company, business, or institution

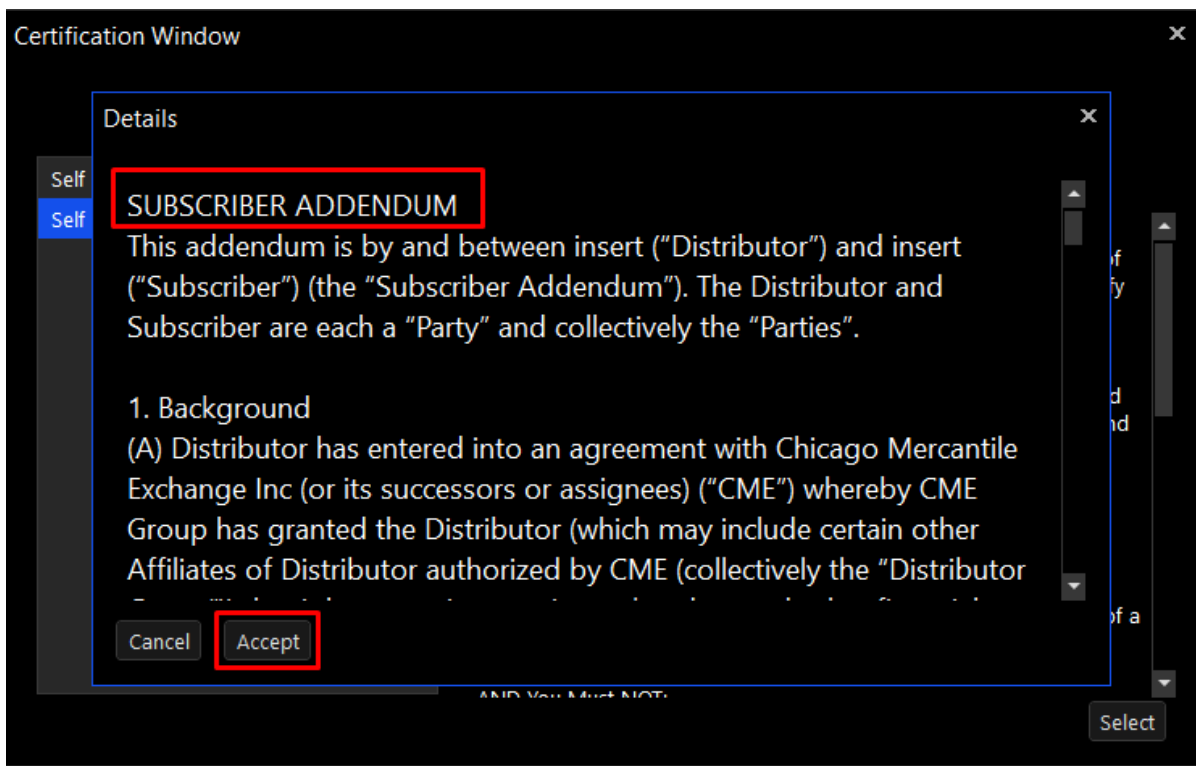


**Need more clarity or have questions?**



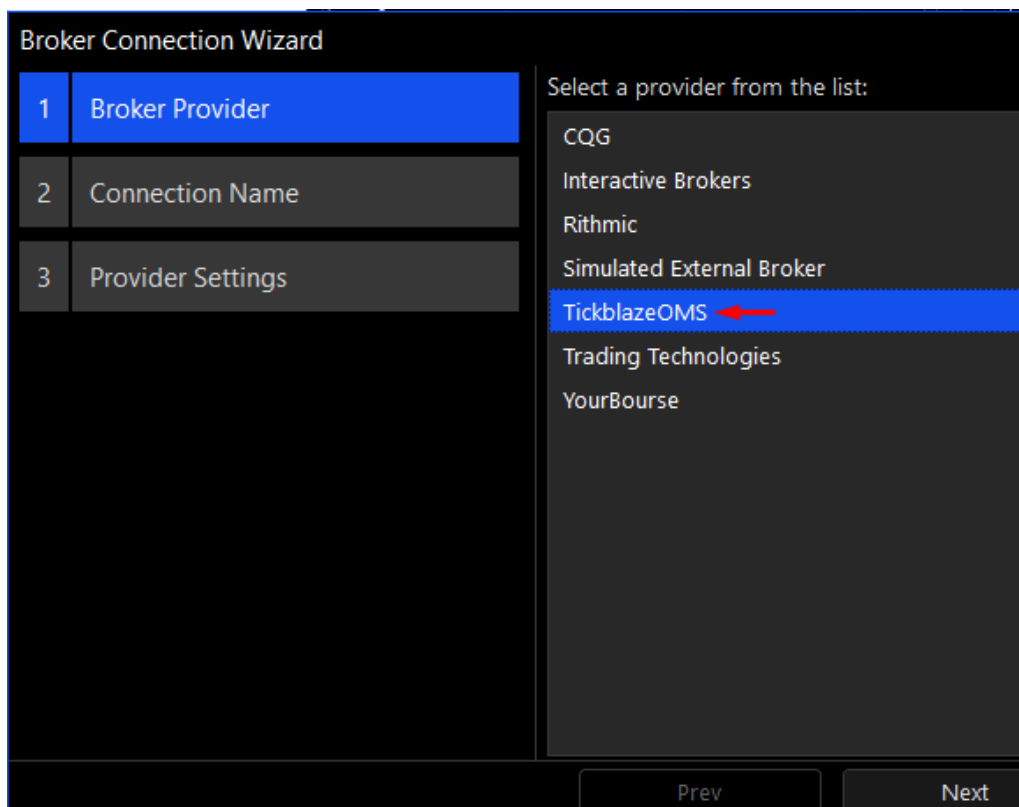
Check out our [Pro vs Non-Pro Status & Compliance FAQ](#).

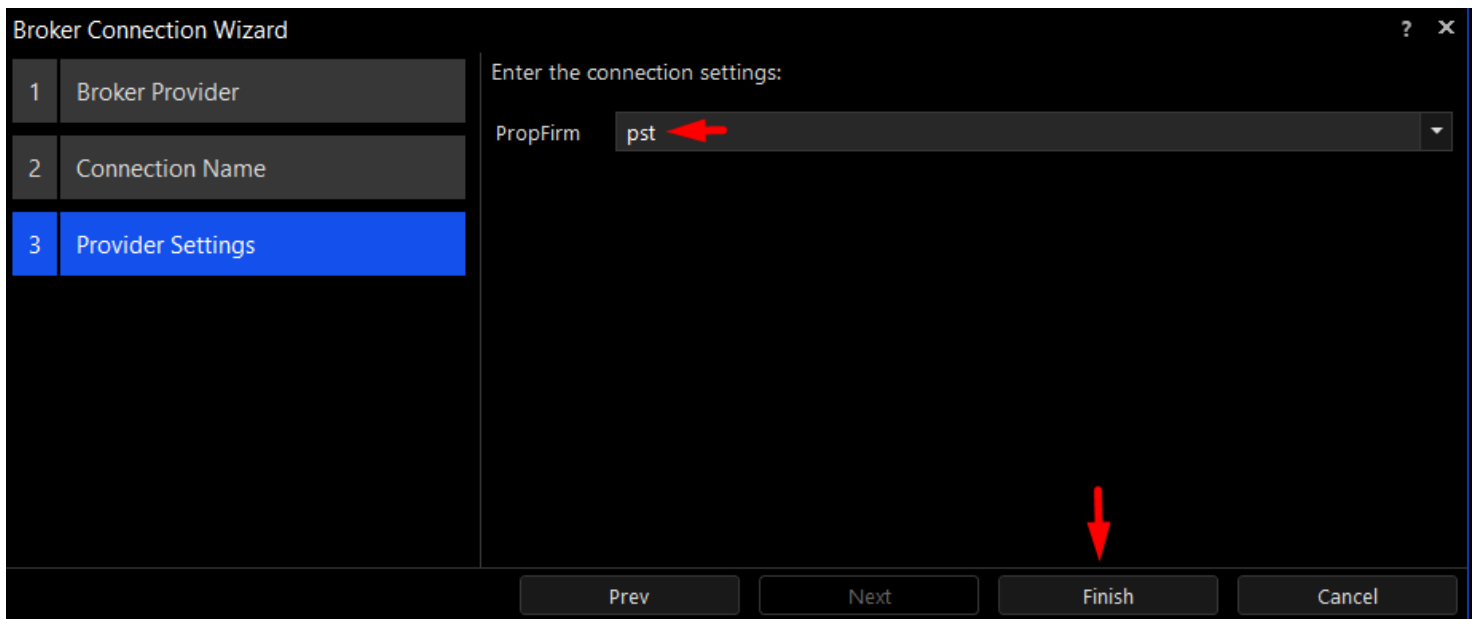
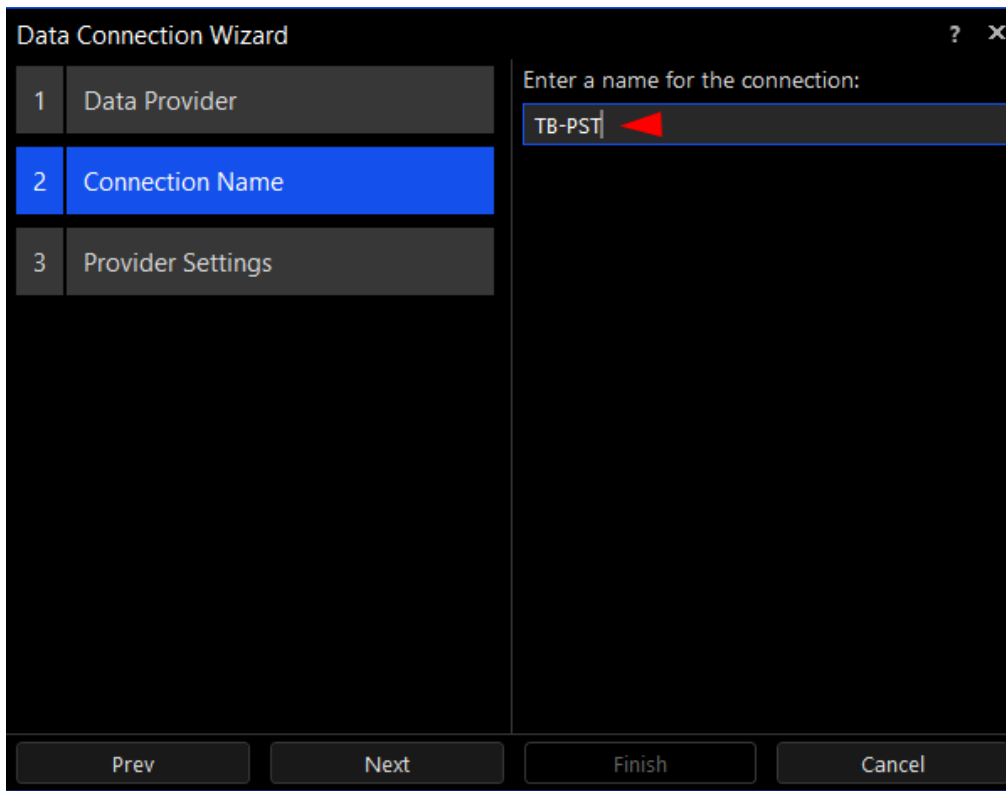
2. **Subscriber Addendum:** Review the document and accept the addendum.



**Step 6: Repeat** the same process for 'New Broker Connection'

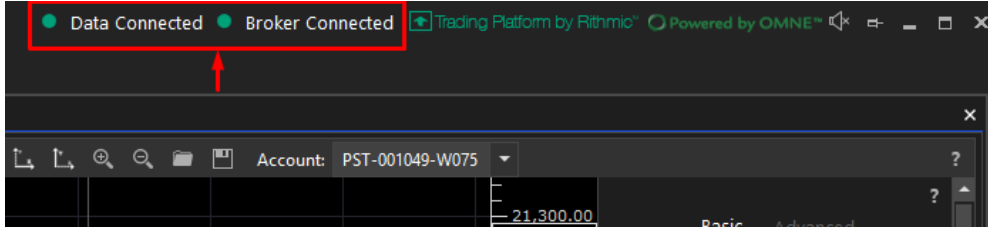
- Select **TickblazeOMS** as the Broker provider → Add any **Connection Name** → Enter your Tickblaze **Credentials** → Prop ID as '**pst**'





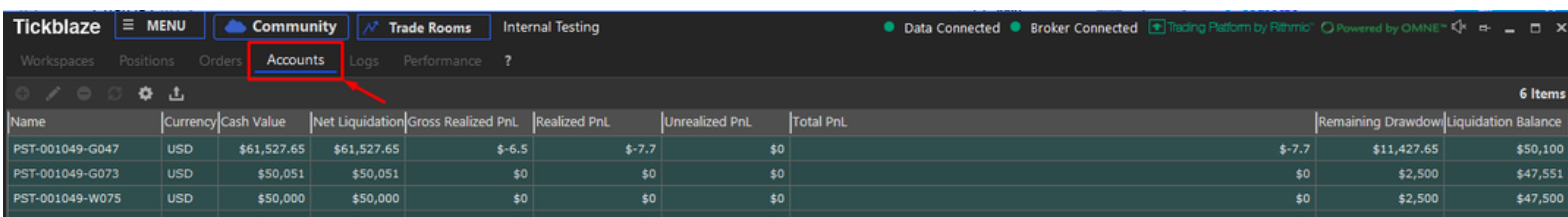
**Step 7:** Once setup is complete, return to the **Connections** section and select both the **Data Connection** and **Broker Connection** you created.

After a successful connection, you'll see **'Data Connected'** and **'Broker Connected'** indicators near the top border of the Tickblaze window, **confirming that both connections are active with a green dot.**



**You can now:**

- View all trading accounts from the **Account** field on your charts
- Monitor your trades via the **Accounts** tab
- Execute orders confidently inside Tickblaze



Name	Currency	Cash Value	Net Liquidation	Gross Realized PnL	Realized PnL	Unrealized PnL	Total PnL	Remaining Drawdown	Liquidation Balance
PST-001049-G047	USD	\$61,527.65	\$61,527.65	\$-6.5	\$-7.7	\$0	\$-7.7	\$11,427.65	\$50,100
PST-001049-G073	USD	\$50,051	\$50,051	\$0	\$0	\$0	\$0	\$2,500	\$47,551
PST-001049-W075	USD	\$50,000	\$50,000	\$0	\$0	\$0	\$0	\$2,500	\$47,500
PST-001049-G074	USD	\$50,000	\$50,000	\$0	\$0	\$0	\$0	\$2,500	\$47,500

**You're All Set!**